
Background to Teacher Supply & Demand in British Columbia

November 2006

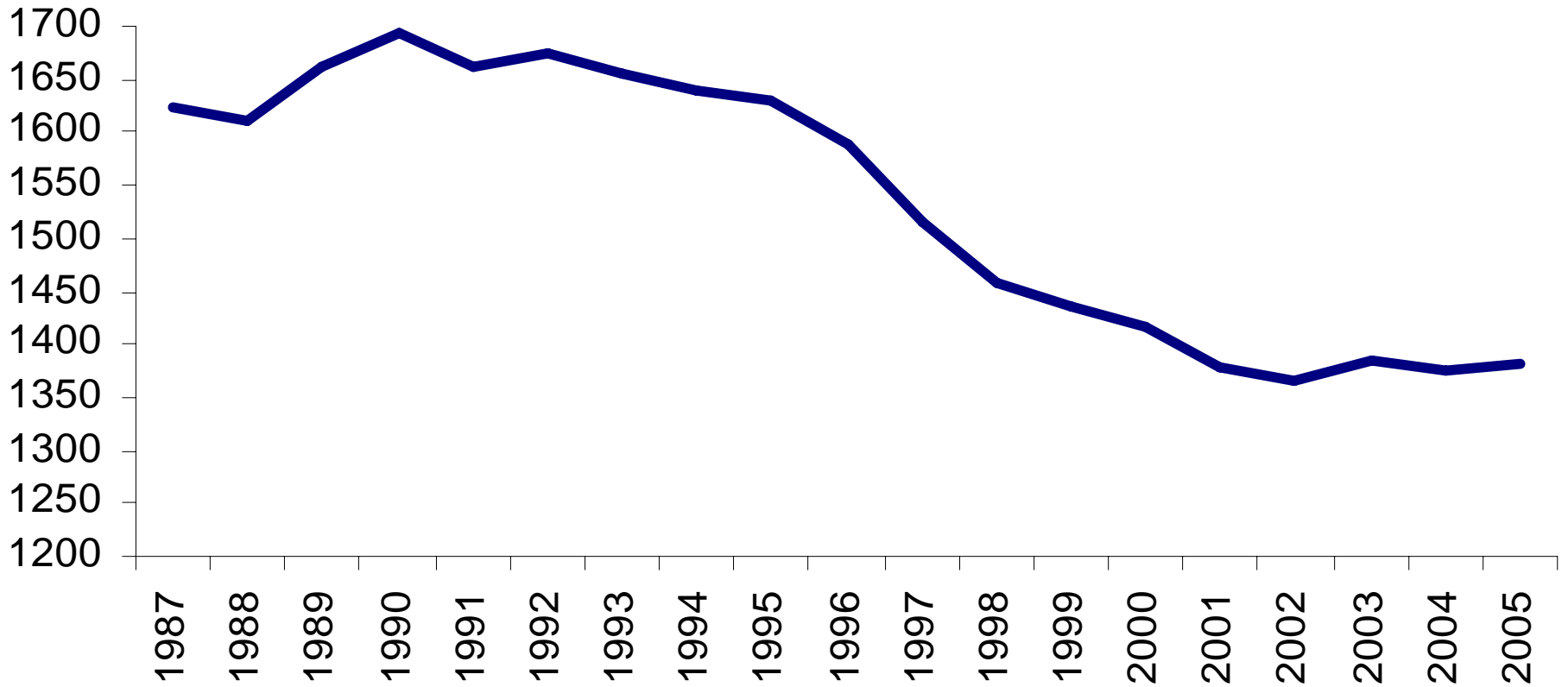
Colleen Hawkey, Ph.D.
BCTF Research
chawkey@bctf.ca

Demographic Context

- Continued declining school-age population and a growing elderly population
- Natural increase remaining steady at low levels
- Inter-provincial and international migration plays important role in population growth
- Teacher retirements will stay at record levels to 2010

British Columbia Total Fertility Rate

Average number of births per 1,000 women
between ages 15 and 49

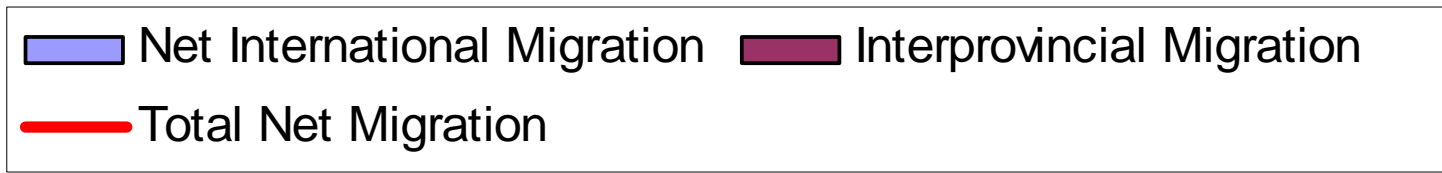
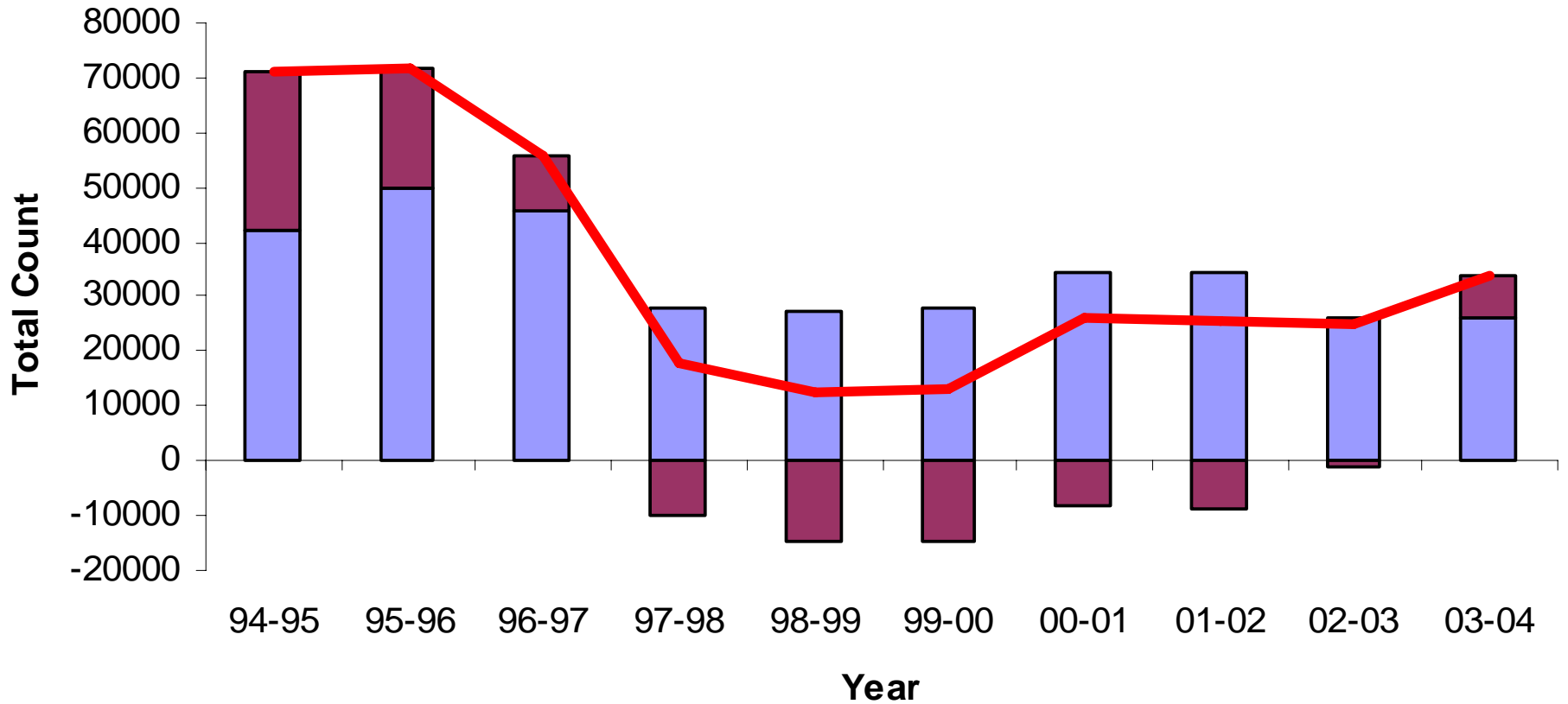


Live Births by Age Group

Live Births per Thousand Women in Age Group

	15-19	20-24	25-29	30-34	35-39	40-44	45-49
1987	21.2	80.4	115.2	78.7	26	3.4	0.2
1997	17.7	62.4	96.5	84.9	35.3	6.1	0.4
2005	10.4	41.4	81.8	89.7	44.3	8.3	0.4

British Columbia Migration, 1995 -2004

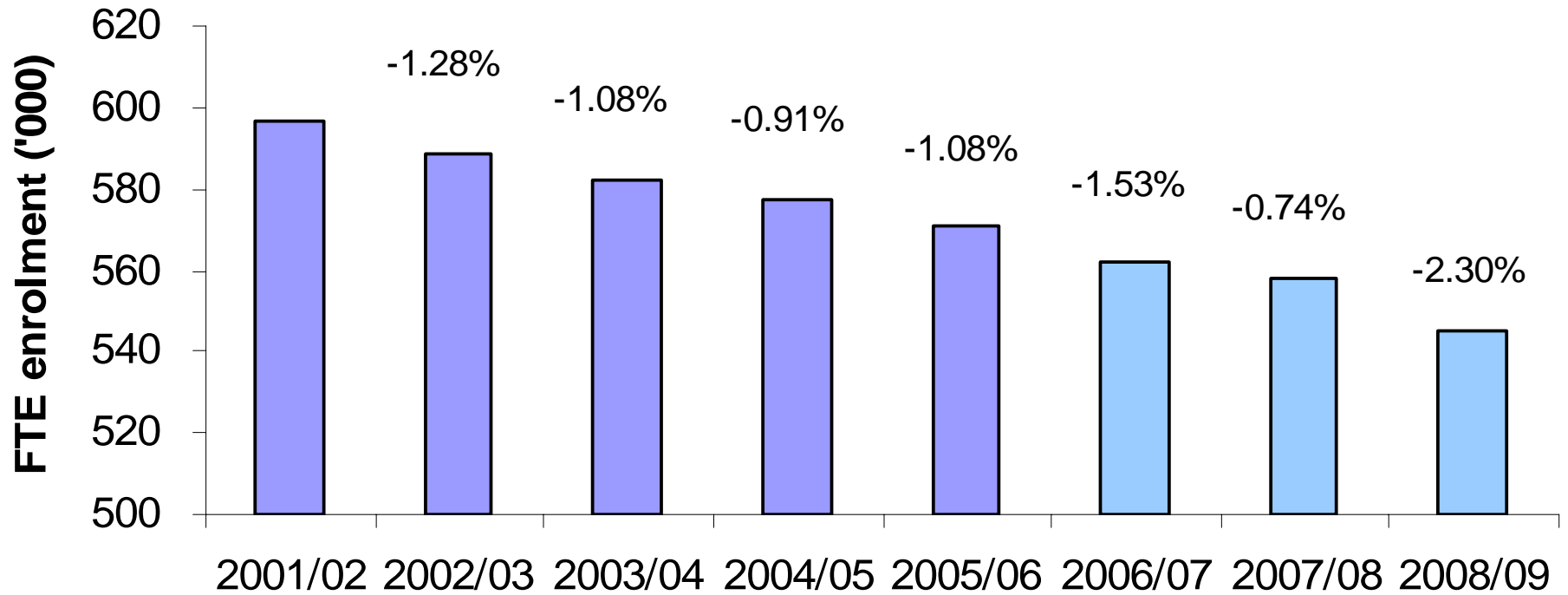


Student Demographics

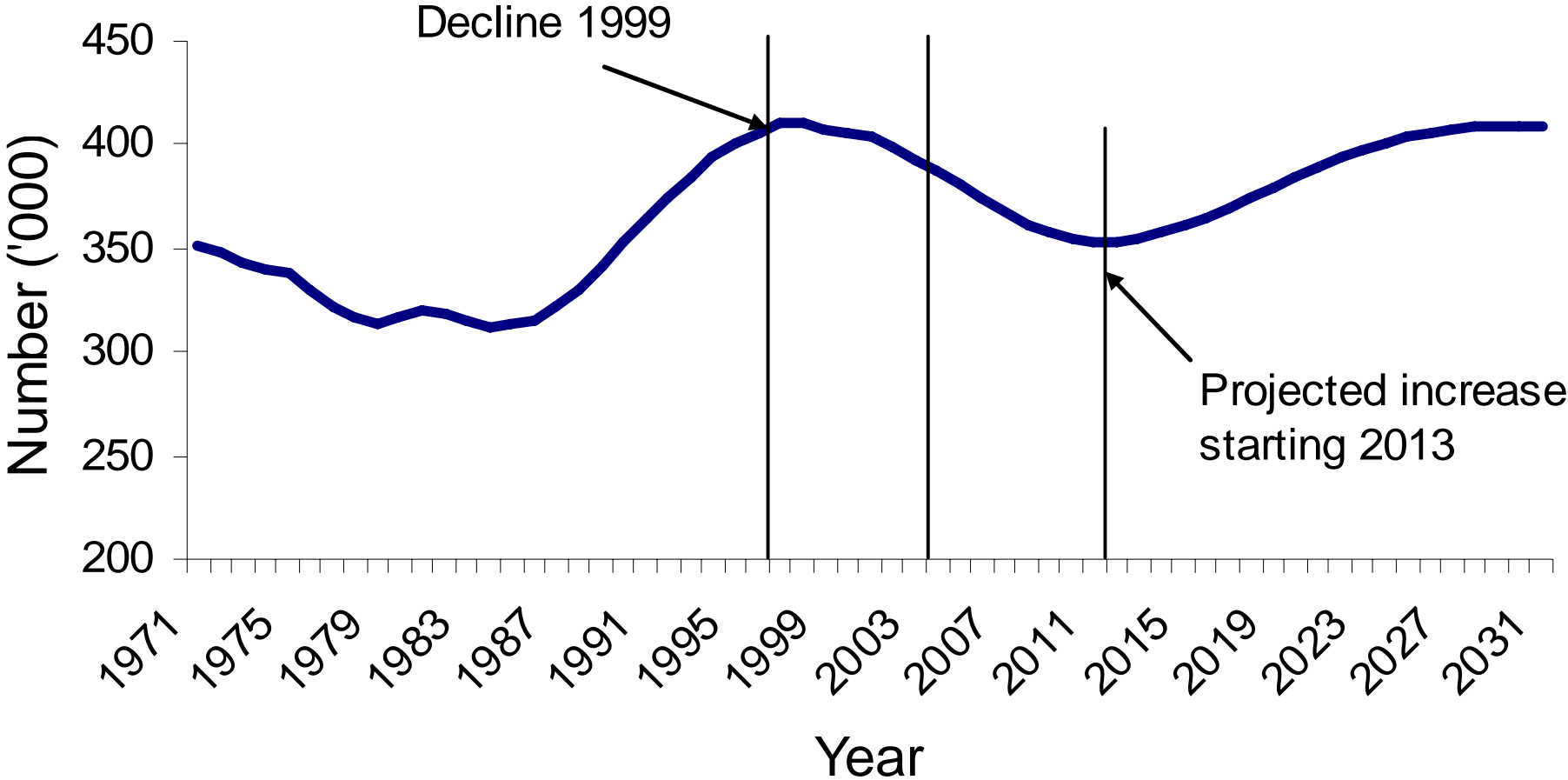
- Overall decline in provincial school age enrolments

- Percent change since 2001/02
 - Public: -4.28%
 - Private: +10.4%
 - Overall: -2.98%

BC student FTE enrolment and year-over-year decline, 2001 - 2008 ('000)



BC population, aged 5-19, 1971 to 2031



Teacher Demographics

2001/02 to 2005/06

■ Full-Time Teachers

- 2005/06: 25,298
- 2001/02: 26,909

■ Part-Time Teachers

- 2005/06: 8,418
- 2001/02: 9,741

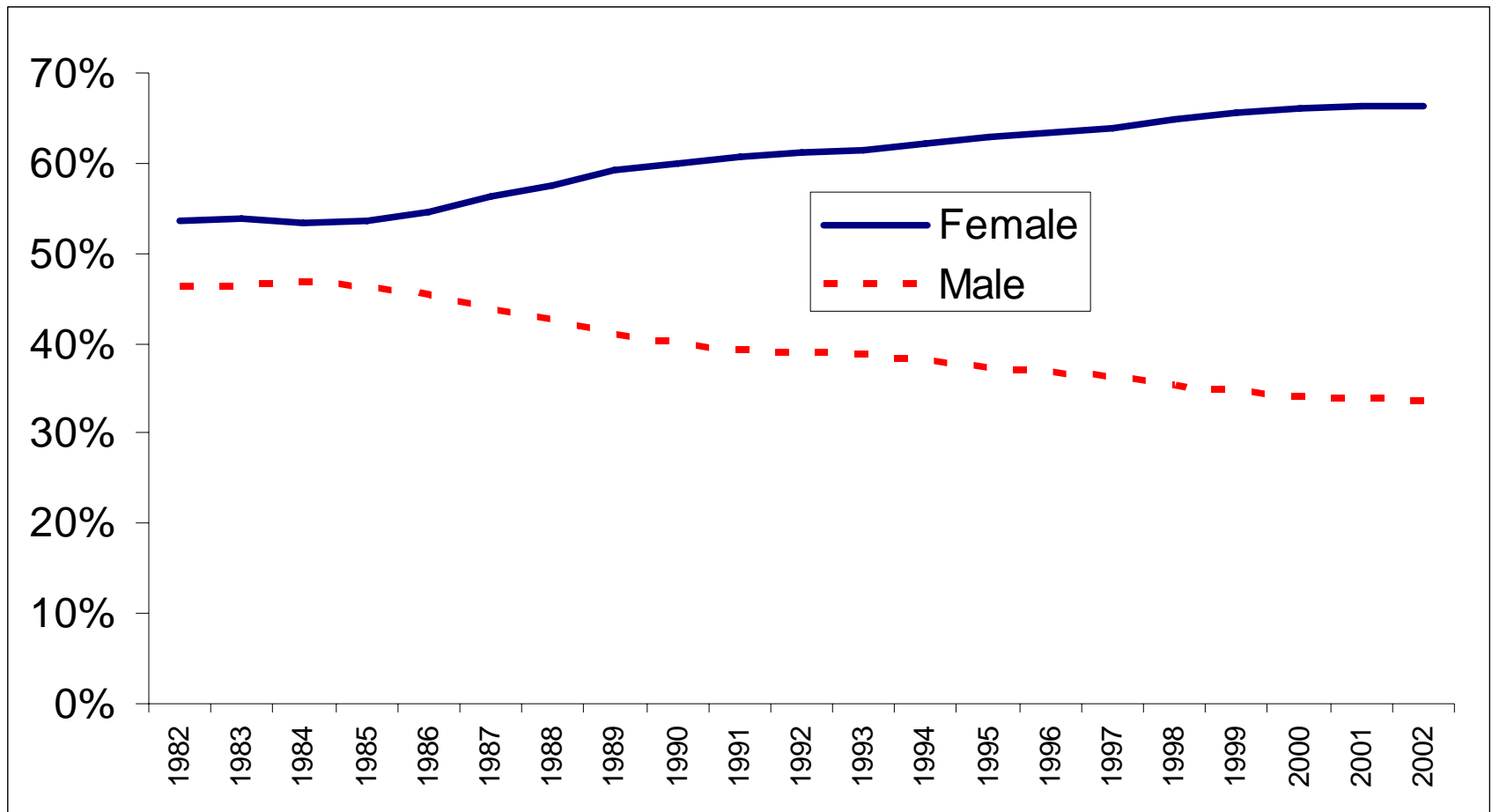
■ Full-Time Teachers

- Female: -3.1%
- Male: -10%

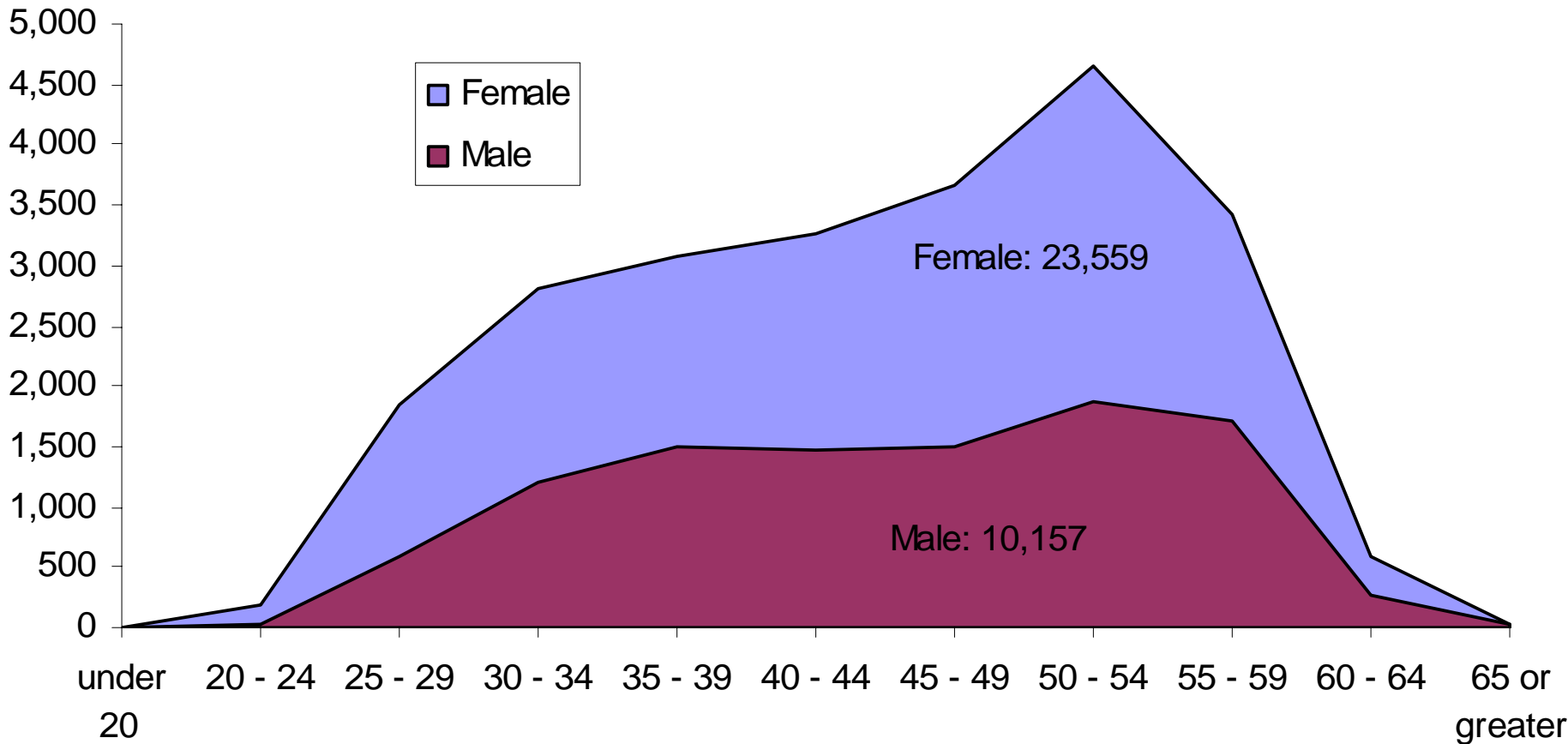
■ Part-Time Teachers

- Female: -12.0%
- Male: -23.3%

Teacher Headcount by Gender, 1982 to 2002

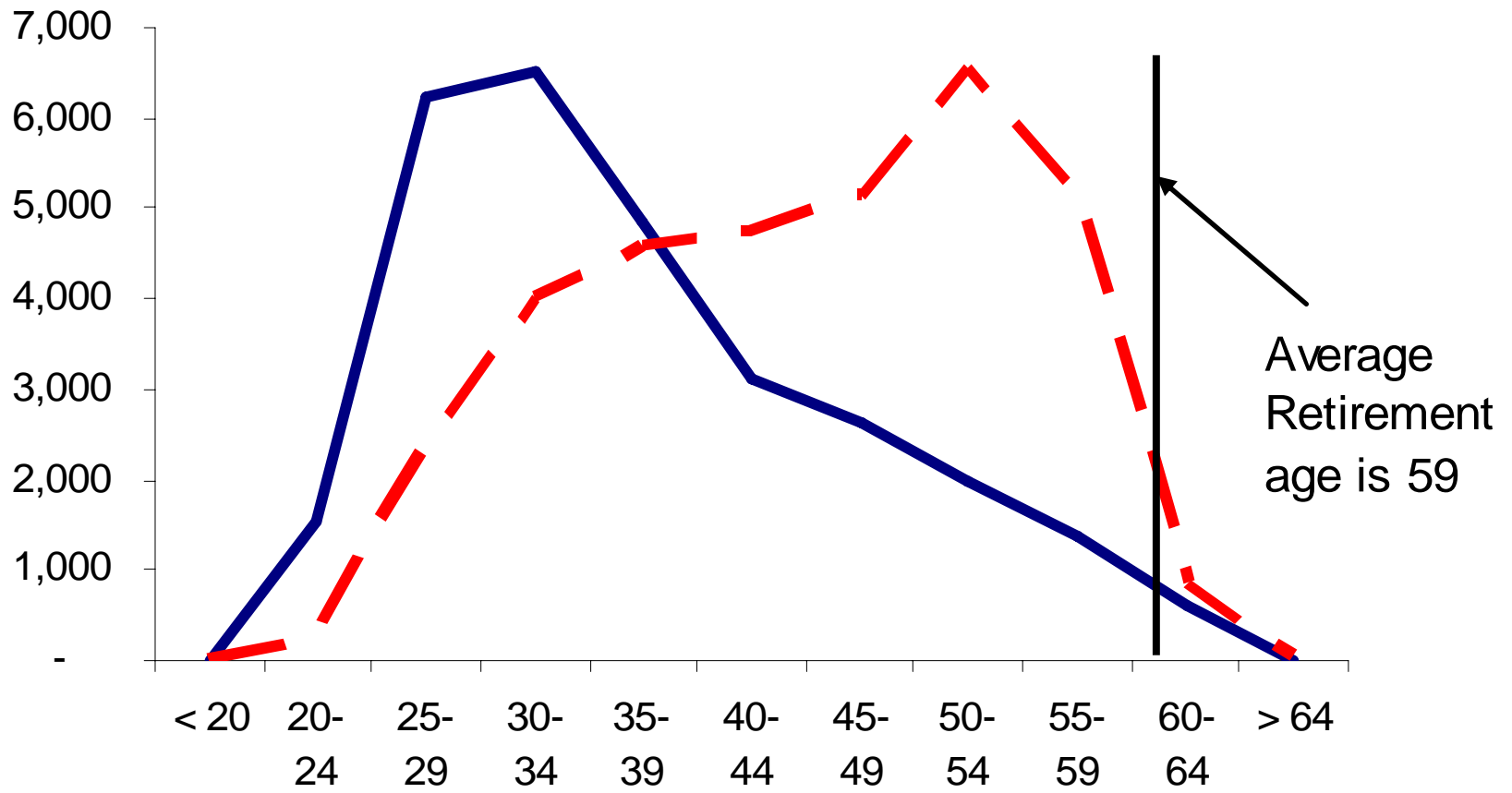


Teacher age distribution by sex, 2005/06



Teacher Age Distribution, 1978-79 and 2005-06

— 1978-79 - - 2004-05



Number of Teacher Retirements

Year	Number of Retirements
1994	668
1995	1,050
1996	970
1997	1,048
1998	1,370 (ERIP)
1999	1,673 (ERIP)
2000	831
2001	1,230
2002	1,542
2003	1,490
2004	1,598
2005	1,805

Teacher Retirements, 2001 to 2005

	Retirements	% of 50+	% of 55+
2001	1230	9.8%	28.1%
2002	1542	12.4%	32.5%
2003	1490	11.8%	27.9%
2004	1598	12.6%	27.8%
2005	1805	14.3%	29.8%

Employment Intentions

51%	TOC, looking for full-time teaching
13%	TOC, looking for part-time teaching
13%	Retired, working as TOC
15%	TOC, not looking for teaching position
8%	Other

Things to think about...

- Population change will not occur equally throughout the province
- More and more parents are choosing to enroll their children in private schools
- Uncertainty about funding targeted to class size and composition
- Uncertainty about impact of recent legislation

Other things to think about...

- Data tracking teacher mobility to Alberta and Ontario and other jurisdictions is severely limited
- The impact of the Trade, Investment and Labour Mobility Agreement between BC and Alberta must be considered
- The projected teacher shortages on an international scale coupled with aggressive recruiting programs featuring attractive incentives (e.g., signing bonus, house allowances) will be felt in BC